

# (FEMALE) MINISTRY DIRECTOR AND COACH

## ABOUT US

We are a church seeking to live for Jesus and bring people to him in the suburbs around Cockburn, Western Australia. We planted in 2018 in Atwell but since 2021 we have been meeting in the Cockburn Youth Centre with around 75-95 people on Sundays.

We model our ministry around major Biblical purposes like seeing God as big, going deep in His word, serving together, acting as a body, and reaching the lost. For the last few years we have deliberately focused on primary and pre-school aged kids and their families but we plan to launch a youth ministry soon since our youth numbers are growing. We are part of the Fellowship of Independent Evangelical Churches (FIEC)

## ABOUT THE ROLE

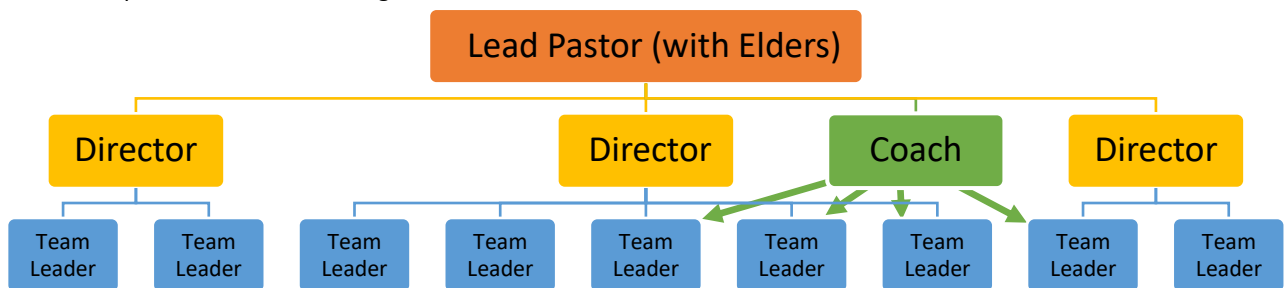
A quick map of how we structure our ministries might be helpful.

The eldership and lead pastor at Southern set the vision and values for the whole church's ministry and this is handed over to a few ministry directors who take on a major ministry area each. These ministry directors work through a few team leaders to implement the vision in specific ways.

So 'directing' means to give input to the lead pastor and eldership about about vision, values, and budget for the ministry area, then to take the vision and equip a few team leaders to make it all happen through their team members. It involves taking responsibility for the leaders being trained in the specific skills they need for their ministry.

We also want to give every team leader at Southern a personal coach. Coaching includes 1-1 investing in the lives of these leaders and helping them grow as mature Christians. It also involves helping these leaders grow in general team-leadership skills. A coach might help a team leader work at implementing the vision the team has been given even if the coach isn't skilled in that particular area. A team leader's coach may be the same person as the one directing the major area of ministry, but not always. Particular as this role starts you will begin getting to know a few team leaders and coaching them before directing the ministry areas.

Right now we have a lot of team leaders but not many area directors so the team leaders mostly report directly to the lead pastor and this is part of the need to bring in coaches for some team leaders.



For this role, we are looking for a woman who can:

- **Direct** at least one of the following major ministries: Youth, Outreach, Serving/training, Membership/community. The area(s) may change from time to time depending on other leaders.
- **Coach** women who are leading teams or small groups in a variety of ministries across the church.
- *Possible: **Lead a team** in a particular ministry area. This may be where the role starts or as needed but the main goal is to build other leaders.*
- Give input to other directors, lead pastor, and elders.
- Report to the lead pastor and be a part of much of his thinking.
- Teach other women to read the Bible and serve Jesus in a variety of ways.
- Be available for crisis ministry with women in the church.
- Pray for Christians serving with you and for the lost you are trying to reach.

## SELECTION CRITERIA

- Theological education equivalent to DipTh (BTh is desirable) or working towards one.
- Experience leading teams and training volunteers.
- Experience planning, starting, and directing ministries.
- Experience working with youth is desirable but not essential.
- Experience explaining the gospel to unbelievers.
- A commitment to personal growth in Christ.

## EXPRESSIONS OF INTEREST

Email [ash@southern.org.au](mailto:ash@southern.org.au) with the subject 'EOI' and include:

- A two-page letter that briefly addresses
  - the selection criteria, the role, and any other relevant experiences.
  - your preferences for number of days (3-5/week)
- *Résumé*
- Name and contact details for the following referees:
  - Current church pastor.
  - A leader you have served under or alongside.
  - Someone who has served in a team you were leading.
  - Optional: A team leader you have trained / coached.

Expressions of Interest will be acknowledged. If you do not receive an acknowledgement within 48 hours, then please resubmit and phone us.

Southern Christian Church reserves the right not to make an appointment.

## CONTACT

Please feel free to contact us for more information about the church or the role.

Ashley Horton

T 0417980293

E [ash@southern.org.au](mailto:ash@southern.org.au)